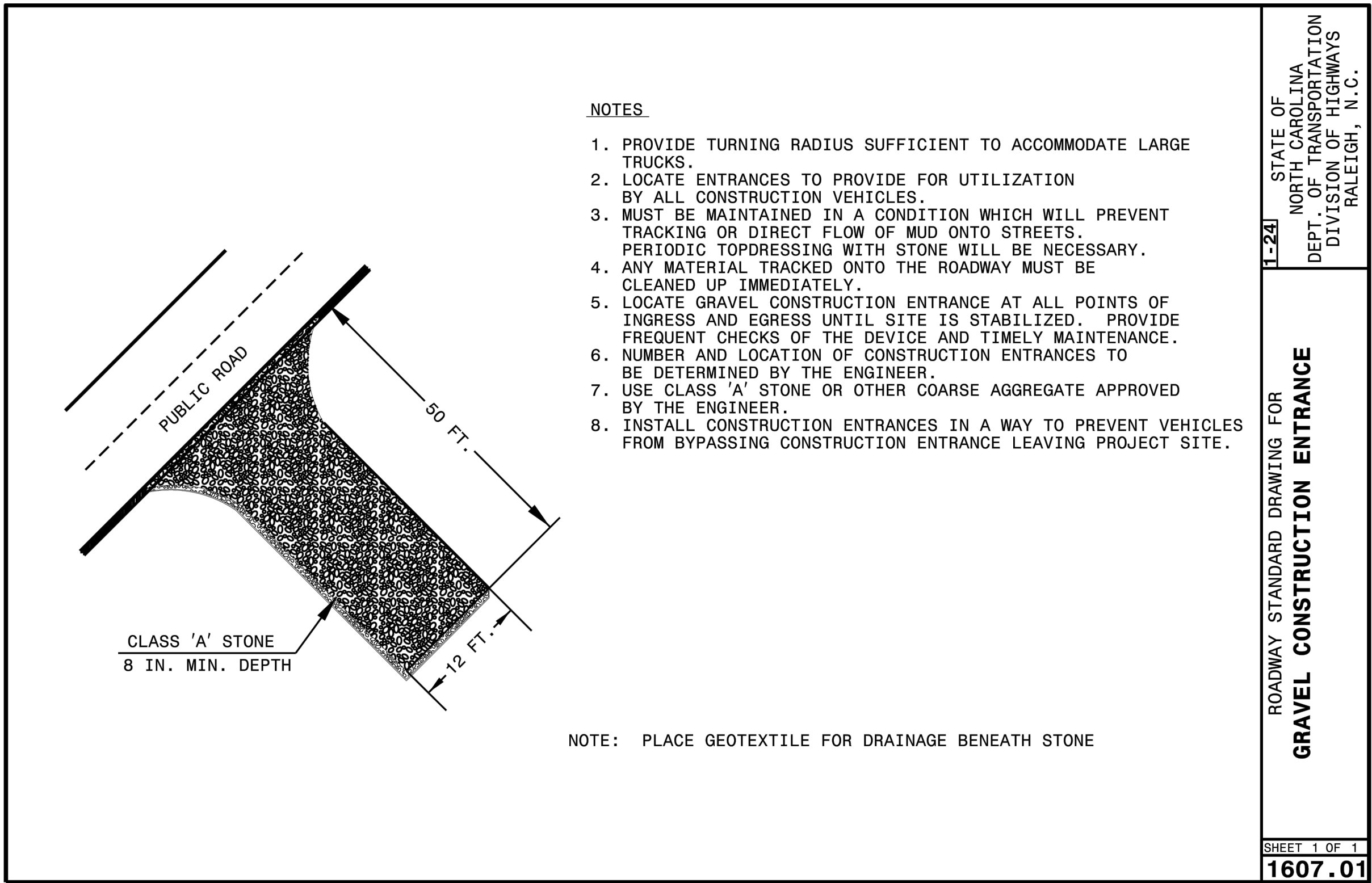
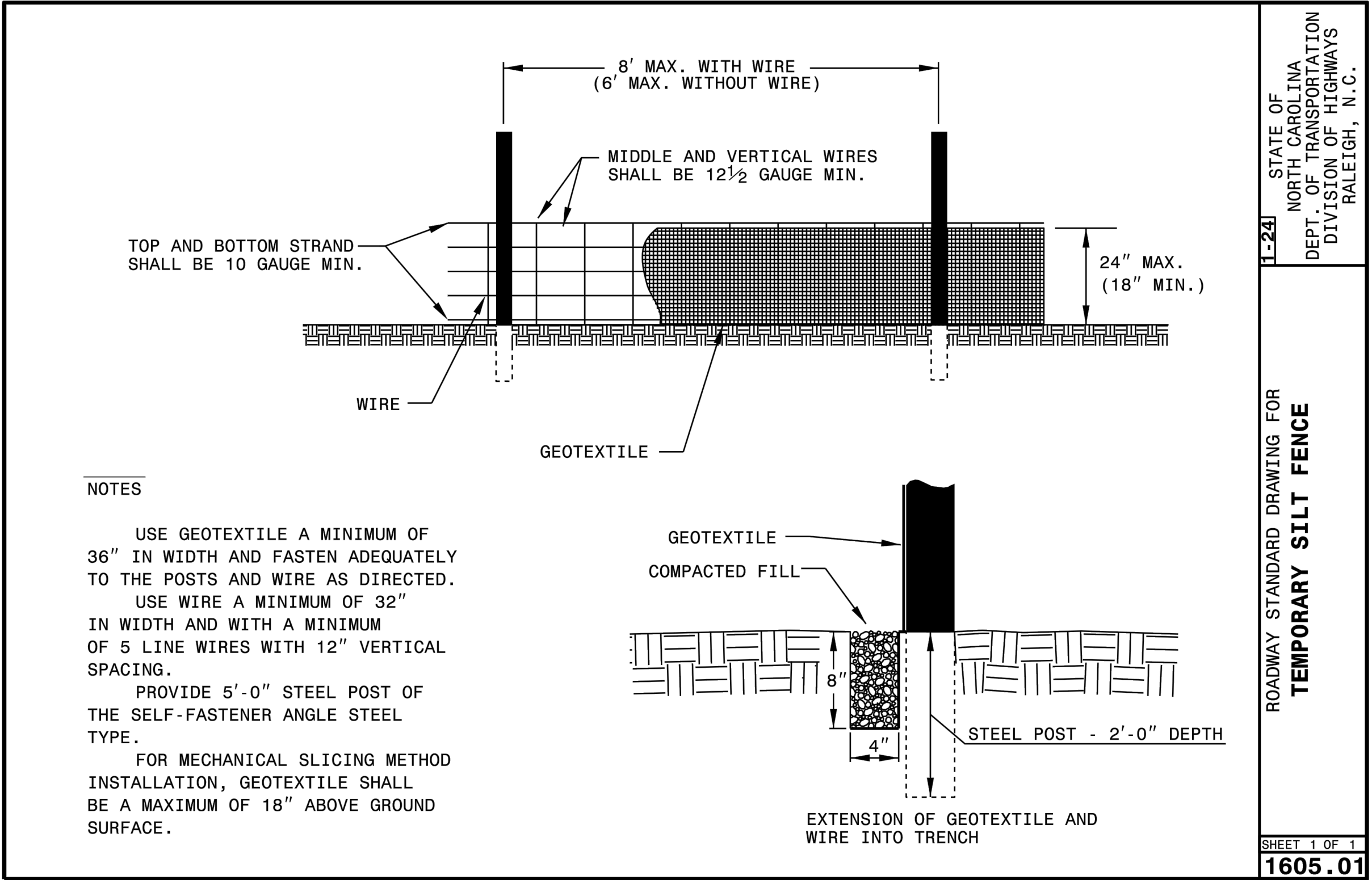


EROSION CONTROL NOTES:

- SEE SHEET CE1.01 FOR EROSION CONTROL PLAN. ALL EROSION CONTROL MEASURES SHALL BE CONSTRUCTED AND MAINTAINED IN ACCORDANCE WITH THE NOTES AND DETAILS PROVIDED ON SHEETS CE5.01 AND CE5.02 AS WELL AS STANDARD NCDOT GUIDELINES.
- MINIMUM EROSION CONTROL MEASURES SHALL BE CONSTRUCTED IN ACCORDANCE WITH THE N.C. EROSION AND SEDIMENT CONTROL PLANNING AND DESIGN MANUAL.
- ALL CONSTRUCTION ACTIVITIES MUST TAKE PLACE WITHIN THE LIMITS OF THE DISTURBANCE AS SHOWN HEREIN. ACTIVITIES OUTSIDE OF THESE SPECIFIC AREAS ARE STRICTLY PROHIBITED.
- INSTALL ESC MEASURES PRIOR TO CONDUCTING ANY DEMOLITION. ESC MEASURES SUCH AS CONSTRUCTION ENTRANCES AND CONCRETE WASHOUTS SHALL BE INSTALLED AND RELOCATED APPROPRIATELY DURING VARIOUS STAGES OF CONSTRUCTION. ANY AREAS THAT ARE WITHIN THE PAVEMENT AREA WHICH ARE USED FOR ACCESS, PARKING OR STORAGE OF EQUIPMENT SHALL BE STABILIZED WITH PERMANENT GROUND COVER SIMILAR TO A CONSTRUCTION ENTRANCE (SEE SHEETS CE1.01)
- CONCRETE WASHOUTS ARE NOT SHOWN IN PLANS. LOCATION SHALL BE DETERMINED BASED ON AVAILABLE SPACE AND PROXIMITY TO ACTIVE WORK AREA.
- ALL WASTE MATERIAL AND CONSTRUCTION DEBRIS SHALL BE DISPOSED OF BY THE CONTRACTOR AT A CONSTRUCTION AND DEMOLITION LANDFILL OR OTHER FACILITY IN POSSESSION OF AN EROSION AND SEDIMENT CONTROL PERMIT AS WELL AS ANY/ALL OTHER APPLICABLE PERMITS.
- CONTRACTOR IS RESPONSIBLE FOR MAINTAINING THE CONSTRUCTION SITE IN A SAFE AND ORDERLY CONDITION AND ADHERING TO THE EROSION CONTROL PLAN AS SET FORTH HEREIN, SEE SHEETS CE1.01, CE5.01, AND CE5.02. DEVIATION FROM THE EROSION CONTROL PLAN IS NOT ALLOWED WITHOUT PRIOR WRITTEN APPROVAL FROM THE DESIGNER.
- CONTRACTOR IS RESPONSIBLE FOR REGULAR INSPECTION AND MAINTENANCE OF ALL EROSION CONTROL MEASURES. ALL MEASURES SHALL BE INSPECTED IMMEDIATELY FOLLOWING ANY MEASURABLE STORM EVENT. ANY REQUIRED MAINTENANCE OR REPAIRS SHALL OCCUR AS SOON AS FEASIBLE.
- CONTRACTOR IS RESPONSIBLE FOR MONITORING WEATHER CONDITIONS, AND FOR TAKING ACTION AS NECESSARY TO STABILIZE THE CONSTRUCTION SITE PRIOR TO FORECASTED/FORESEEABLE STORM EVENTS.
- CONTRACTOR TO MINIMIZE TRACKING EQUIPMENT AND ASSOCIATED SEDIMENT/DEBRIS FROM THE CONSTRUCTION SITE ONTO ADJACENT ROADS.
- IF IT IS DETERMINED DURING CONSTRUCTION THAT SIGNIFICANT SEDIMENT IS LEAVING THE SITE, DESPITE PROPER IMPLEMENTATION AND MAINTENANCE OF THE EROSION CONTROL MEASURES, THE CONTRACTOR IS OBLIGATED TO TAKE ADDITIONAL CORRECTIVE ACTION. THE CONTRACTOR SHALL CONTACT THE ENGINEER TO DISCUSS ADDITIONAL MEASURES.
- DISTURBANCE OUTSIDE OF THE EXISTING PAVED AREA IS TO BE AVOIDED WHERE POSSIBLE. GROUND STABILIZATION AND SEEDING TO BE AT THE DIRECTION OF THE PROJECT REPRESENTATIVE. SHOULD THE PROJECT REPRESENTATIVE DETERMINE THAT STABILIZATION AND SEEDING IS REQUIRED, THE SEED MIX SELECTED SHALL BE AT THE DIRECTION OF THE PROJECT REPRESENTATIVE.
- INSTALL TEMPORARY MEASURES AS SHOWN ON THE APPROVED PLAN. INITIAL SITE PREPARATION SHALL OCCUR ONLY AS NECESSARY TO INSTALL THESE DEVICES. THE REMAINDER OF DEMOLITION AND SITE PREP SHALL OCCUR AFTER CONTROL MEASURES HAVE BEEN INSTALLED.
- REMOVE TEMPORARY SEDIMENT AND EROSION CONTROL MEASURES ONCE SITE IS FULLY STABLE. CONTACT THE ENGINEER TO ASSIST ORGANIZING A SITE WALK-THROUGH PRIOR TO REMOVING TEMPORARY SEDIMENT AND EROSION CONTROL DEVICES.
- THE ENGINEER SHALL BE CONTACTED WITH ANY ISSUES OR CONCERNS REGARDING CONSTRUCTION OR MAINTENANCE OF EROSION CONTROL PRACTICES.
- THE LANDOWNER, THE FINANCIALLY RESPONSIBLE PARTY, OR THE AGENTS THEREOF SHALL PERFORM AN INSPECTION OF THE AREA COVERED BY THE PLAN AFTER EACH PHASE HAS BEEN COMPLETED AND AFTER ESTABLISHMENT OF GROUND COVER.
- NO STAGING OF MATERIALS WITHIN 50 FEET OF OPEN DRAINAGE STRUCTURE.
- PLACE A LAYER OF SAND, SCREENINGS, OR FINES ON PAVED SURFACES BEFORE DEPOSITING ANY EXCAVATION MATERIALS.
- CONTACT THE OWNER'S REPRESENTATIVE WITH ANY CONCERNS DURING CONSTRUCTION OR ANY SPECIFIC MAINTENANCE ISSUES.
- TOTAL DISTURBED AREA (ENCOMPASSED BY LOD): 9.44 ACRES.



1 GRAVEL CONSTRUCTION ENTRANCE DETAIL
DT2.02 SCALE: NTS



2 TEMPORARY SILT FENCE DETAIL
DT2.02 SCALE: NTS

WSP USA INC.
NORTH CAROLINA
LICENSE NO. F-0165

1001 MOREHEAD SQUARE DRIVE
SUITE 610
CHARLOTTE, NC 28203
T 704-342-5401 | www.wsp.com

NO.	DESCRIPTION	DATE

BILLY MITCHELL AIRPORT (HSE)

PAVEMENT REHABILITATION PROJECT
NCDOT PROJECT NO. 36244.74.1.1

53262 BILLY MITCHELL ROAD
FRISCO, NC 27936

Robert M. Green
971672024

SHEET TITLE

EROSION CONTROL DETAILS
SHEET 2 OF 2

DATE

SEPTEMBER 16, 2024

SCALE

NTS

DRAWN BY

TAW

CHECKED BY

RMG

APPROVED BY

RMG

WSP PROJECT NUMBER

188695-05

SHEET NUMBER

CE5.02

SHEET 20 OF 26